



Lake Sugar Plum

“Wealth is Created by Capitalizing on Opportunities

that Come at the Most Inconvenient Time.”

One of the Most Outstanding Lakefront Recreational Properties...

- 242.6 +/- High Quality Lakefront Recreational Property
- 36+/- Acre Lake
- Abundant Deer, Turkey, Quail, and Duck Habitat
- Quality Fresh Water Fishery
- Steel Construction Barn/Storage Building
- 3 Deep Water Wells
- Electrical Service
- Natural & Planted Timber, Hardwoods, and Food Plots
- Well-Maintained Road System
- Quality Timber
- Historical Recreational Property
- 1500± ft of Road Frontage
- 2+ Acre Pond
- 2008 Real Estate Appraisal Available by Request
- **Sealed Bid Auction, Deadline Noon, 10/30/08**



**JON
KOHLER**
& ASSOCIATES, LLC
REAL ESTATE ADVISORS

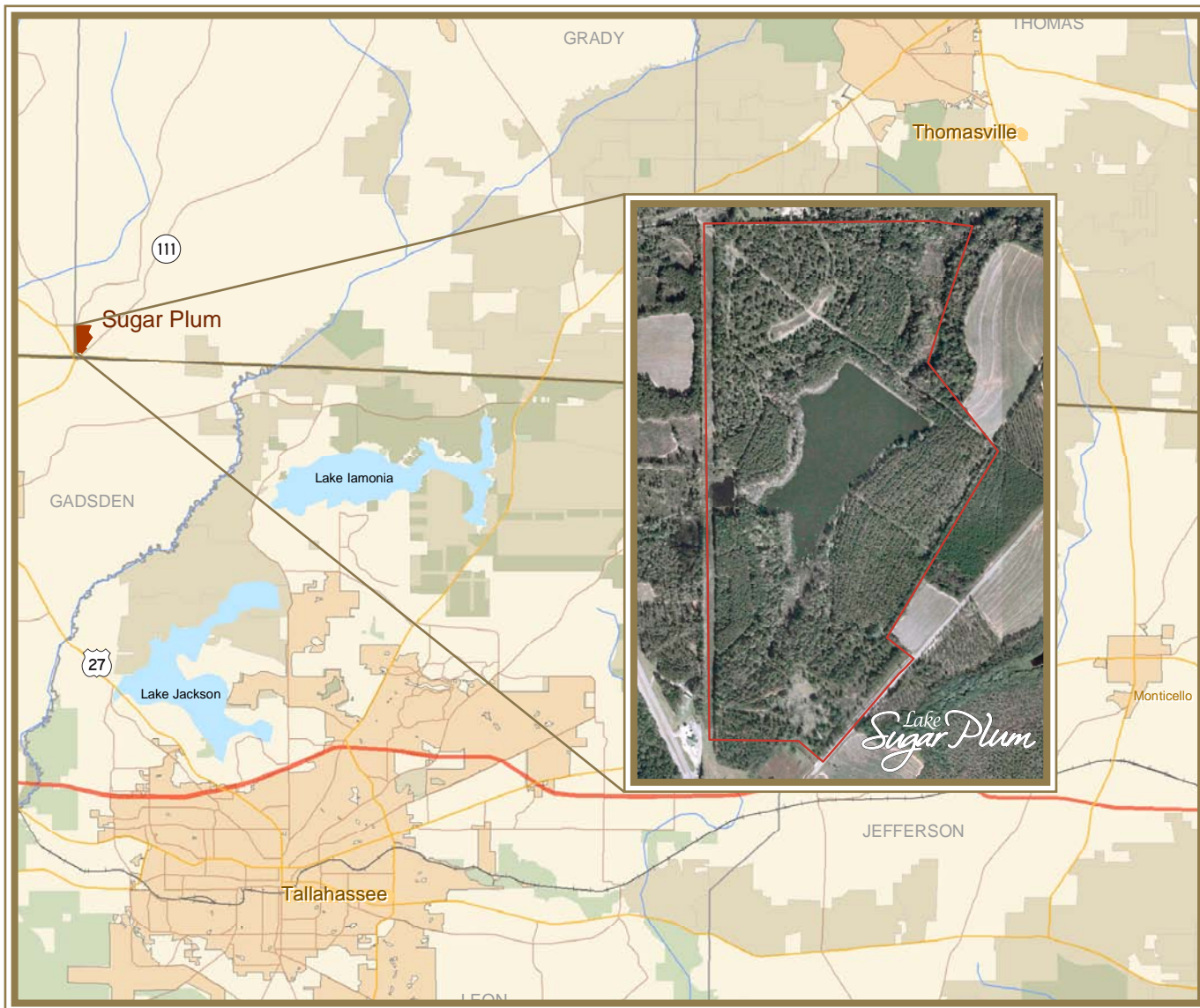


www.jonkohler.com



**PLANTATION
MARKETING**
Group, LLC

ONE OF THE GREATEST OPPORTUNITIES IN A GENERATION...



“Representing Landowners of High Quality Recreational & Investment Properties.”

Jon Kohler & Associates are real estate advisors representing a select group of high net-worth landowners and investors in the plantation, high quality land, and conservation development markets.

With sales of almost \$250,000,000 in the last five years alone, they are the leading plantation and high-quality land brokerage in North Florida and South Georgia.



JON KOHLER
& ASSOCIATES, LLC
REAL ESTATE ADVISORS

Jon Kohler
(850) 508-2999

www.jonkohler.com

Erica Glidewell
(850) 459-8733