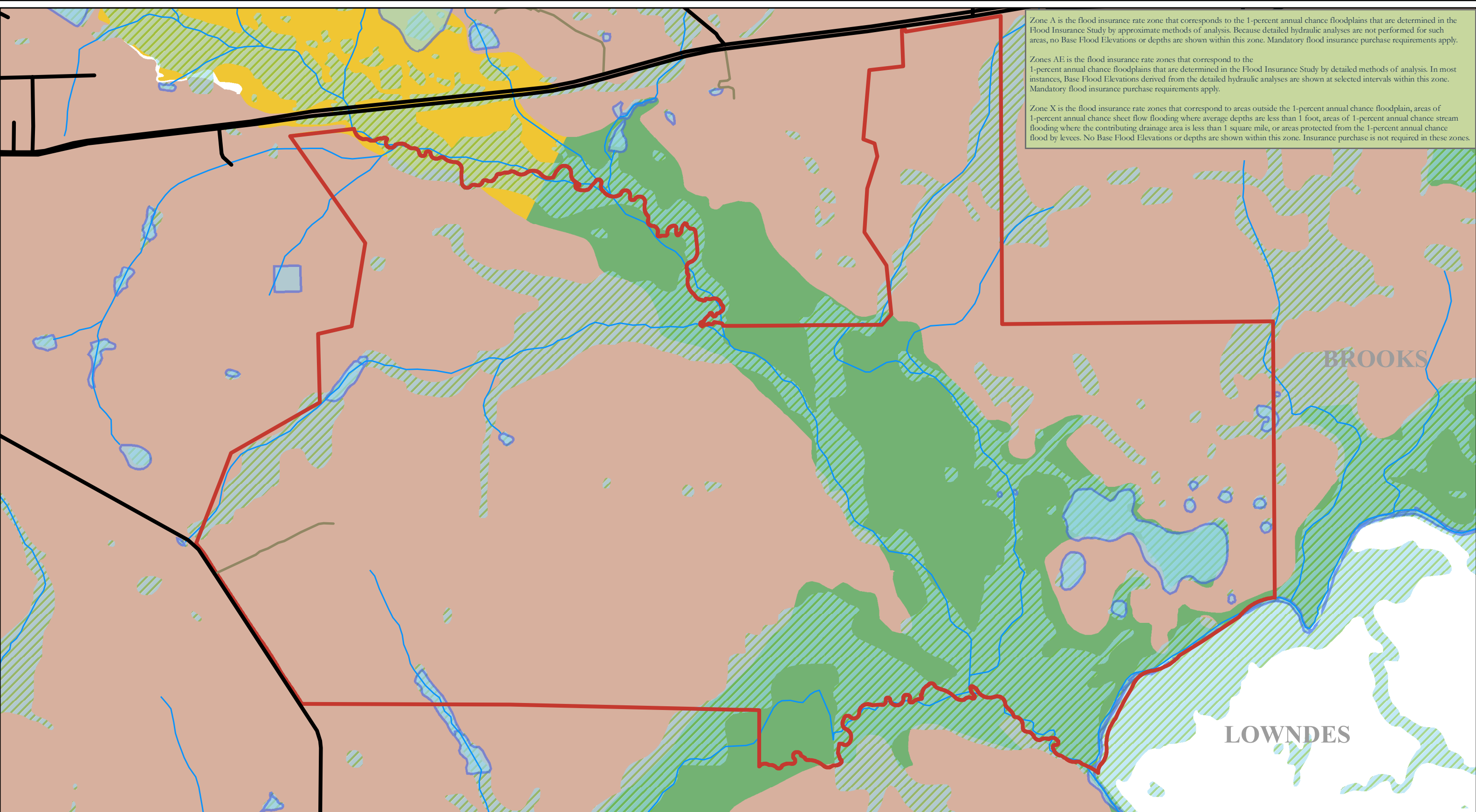


Zone A is the flood insurance rate zone that corresponds to the 1-percent annual chance floodplains that are determined in the Flood Insurance Study by approximate methods of analysis. Because detailed hydraulic analyses are not performed for such areas, no Base Flood Elevations or depths are shown within this zone. Mandatory flood insurance purchase requirements apply.

Zones AE is the flood insurance rate zones that correspond to the 1-percent annual chance floodplains that are determined in the Flood Insurance Study by detailed methods of analysis. In most instances, Base Flood Elevations derived from the detailed hydraulic analyses are shown at selected intervals within this zone. Mandatory flood insurance purchase requirements apply.

Zone X is the flood insurance rate zones that correspond to areas outside the 1-percent annual chance floodplain, areas of 1-percent annual chance sheet flow flooding where average depths are less than 1 foot, areas of 1-percent annual chance stream flooding where the contributing drainage area is less than 1 square mile, or areas protected from the 1-percent annual chance flood by levees. No Base Flood Elevations or depths are shown within this zone. Insurance purchase is not required in these zones.



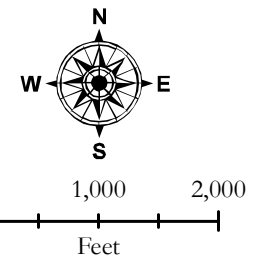
JON KOHLER & ASSOCIATES



- | | |
|-------------------|-------------|
| — Dirt Roads | Flood Zones |
| — Paved Roads | ■ A |
| ▭ Bray Plantation | ■ AE |
| — Rivers | ■ X |
| ▨ Wetlands | ■ Lakes |

Morton Bray Plantation
Brooks County, GA
 Approximately 3,500 +/- Acres

This is a proprietary analysis and not to be distributed
 Jon Kohler & Associates
 8240 Centerville Road - Tallahassee, FL 32309
 Cell: 850.508.2999 - Telephone: 850.907.2076
 Fax: 850.907.0002
 www.jonkohler.com



ADVANCED GEOSPATIAL INC.
 2441 Monticello Dr., Ste. 600
 Tallahassee, FL 32303
 850.580.4447
 www.adgeo.net

NOTE: This geographic product was developed by Advanced Geospatial Incorporated (AGI). Although efforts have been made to ensure information displayed herein is accurate and useful, AGI assumes no responsibility for errors in the information and does not guarantee that data are free from errors or inaccuracies. Similarly, AGI assumes no responsibility for consequences of inappropriate uses or interpretations of the data. Accordingly, these digital data are distributed in present condition and user assumes all risk as to their quality, results obtained from their use, and performance of the data. AGI bears no responsibility to inform users of any changes made to this data. Anyone using this data is advised that precision implied by the data may far exceed actual precision.